

XCR Series / High Frequency Resonance

GENERAL TECHNICAL CHARACTERISTICS

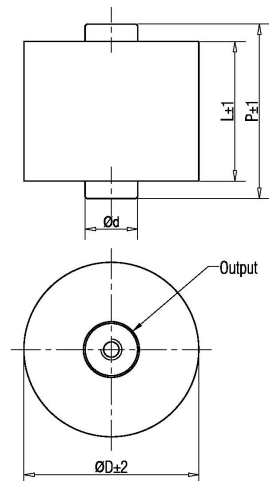
Reference Standards : IEC 61071 60068 60384
 Dielectric : Polypropylene film
 Construction : Extended metallized film, Dry construction.
 Coating : Self extinguishing plastic case UL94V0
 Leads: Lead screw M8

ELECTRICAL CHARACTERISTICS

Operating Temperature Range : - 40 to + 85 °C (case)
 Capacitance : 0.04 to 6µF
 Peak to Peak Voltage : 1200 to 5000 V.DC
 Tolerance : ± 5% ,
 Dissipation Factor: 5×10⁻⁴ Measured at 1000±20 Hz and 25±5°C .
 Life expectancy : 100,000 hours at Un and 70 °C (Hot-spot temperature).

TEST METHODS AND PERFORMANCES

Dielectric Strength: 1.5Un applied for 60s at 25±5°C
 Test Voltage Terminal to Case : 3kVAC/50Hz for 60s
 Insulation Resistance : ≥ 5000 s after 1 minute of electrification at 100Vdc (25±5°C)



F6	F8
d= 15mm	d= 18mm

Electrical specifications, ordering codes

Cap (µF)	Dimension			du/dt (V/µs)	I _{rms} @25° C	ESR@1.0k Hz	Output Insert	Ordering Code
	D	L	P					
Un 1200VDC , Urms 500VAC								
2.0	48	37	49	900	40	2.1	M6	XCR-1200-2.0-3
3.0	58	37	49	800	47	1.8	M6	XCR-1200-3.0-3
4.0	67	37	49	600	56	1.6	M6	XCR-1200-4.0-3
5.0	76	37	49	600	66	2.2	M6	XCR-1200-5.0-3
Un 2000VDC , Urms 750VAC								
0.3	38	37	49	1500	30	2.7	M6	XCR-2000-0.30-
0.33	38	37	49	1500	32	2.7	M6	XCR-2000-0.33-
0.4	43	37	49	1500	36	2.7	M6	XCR-2000-0.40-
0.44	45	37	49	1500	38	2.6	M6	XCR-2000-0.44-
0.47	46	37	49	1500	40	2.6	M6	XCR-2000-0.47-
0.6	51	37	49	1500	45	2.5	M6	XCR-2000-0.60-
0.7	55	37	49	1500	48	2.4	M6	XCR-2000-0.70-
0.9	62	37	49	1100	52	2.3	M6	XCR-2000-0.90-
1.0	65	37	49	1100	55	2.2	M6	XCR-2000-1.0-3
Un 3000VDC , Urms 1200VAC								
0.2	43	40	52	1800	32	2.8	M6	XCR-3000-0.20-
0.3	52	40	52	1800	38	2.6	M6	XCR-3000-0.50-
0.4	60	40	52	1800	45	2.5	M6	XCR-3000-0.40-
0.44	62	40	52	1800	48	2.5	M6	XCR-3000-0.44-
0.47	65	40	52	1500	50	2.4	M6	XCR-3000-0.47-
0.6	73	40	52	1500	58	2.2	M6	XCR-3000-0.60-
0.65	76	40	52	1500	60	2.1	M6	XCR-3000-0.65-
0.7	79	40	52	1500	65	2	M6	XCR-3000-0.70-
Un 5000VDC , Urms 2000VAC								
0.04	58	54	76	3000	35	2.2	M6	XCR-5000-0.04-
0.06	66	54	76	3000	45	2.2	M6	XCR-5000-0.06-
0.08	58	54	76	3000	45	2.2	M6	XCR-5000-0.08-
0.12	70	54	76	3000	50	2	M6	XCR-5000-0.12-
0.14	76	54	76	3000	58	1.8	M6	XCR-5000-0.14-
0.2	90	54	76	3000	65	1.6	M8	XCR-5000-0.20-
0.22	94	54	76	3000	70	1.5	M8	XCR-5000-0.22-

XCR -	3000 -	0.4-	40F6
Series	Voltage	Capacitance	Terminals type or line connectio

40	Length of capacitor
F6	Terminals type or line connection